

Directions to the Sons of Utah Pioneers National Office

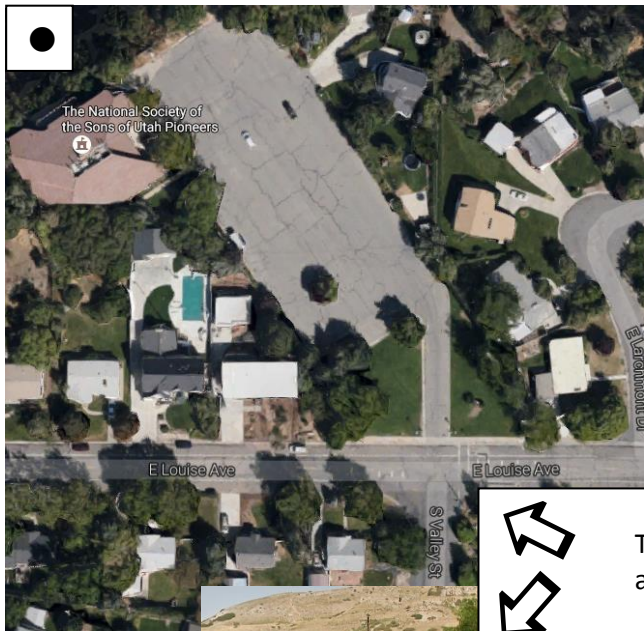
3301 East Louise Ave. Salt Lake City, UT 84109

From North:

From I15 Southbound, take exit 304, I80 East toward Cheyenne. Continue east for about 3 miles then stay right to take exit 128, I215/Belt Route. Just around the bend, as you begin going south, take exit 3 and turn right, heading west, on 3300 South. Continue heading west for a couple of blocks then turn right at 3300 East. (See pic▼below) McDonalds and Smiths Marketplace are on the east side and REI is on the west side of this road. (3300 East is also known as Valley Street.) Head north until Valley Street ends at a stop sign (See pic●below) which is Louise Ave. Go directly north over Louise and you are entering the parking lot. The building is located in the back of the property on the left hand side.

From South:

From I15 Northbound, just beyond the 7200 South exit, take exit 298, I215 Belt Route. Stay right to merge on to I215 East. Continue on I215 for about 9 miles and take exit 4, 3900 So. /3300 So. Turn left on Wasatch Blvd and continue north for less than a mile to 3300 South. Turn left, heading west, for a couple of blocks then turn right at 3300 East. (See pic▼below) McDonalds and Smiths Marketplace are on the east side and REI is on the west side of this road. (3300 East is also known as Valley Street.) Head north until Valley Street ends at a stop sign (See pic●below) which is Louise Ave. Go directly north over Louise and you are entering the parking lot. The building is located in the back of the property on the left hand side.



The corner of Louise Ave (2920 South) and Valley St (3300 East)

